

WHALE WATCH KAIKŌURA - WHEEL CHAIR ACCESSIBILITY

Whale Watch Kaikōura has two vessel types ranging between 24m to 18m in length. All seating is in the main cabin with viewing platforms around the lower deck and the upper deck.

Vessel - Te Ao Marama 24m
Vessels - Tohora & Wawahia 18m

When we have guests join with us that are unable to move around we place them in seating on one side of our vessel and do our best to keep the windows clear and place our marine life sightings on that side of the vessel.

The first two rows on each side of the vessel are ideal places in which we would place people of limited mobility, they are close to the side door and easiest for us to monitor and keep the windows clear.



Whale Watch has a Gold Trax Seal of Approval, New Zealand's benchmark of Adaptive Adventure Travel & Inclusive Tourism.

The Gold Seal is the ultimate inclusive company.

The seal indicates that the company is willing and able to provide a tailored adaptive experience for different abilities when possible.



AT CHECK IN

We will issue our guests boarding pass and have them go to marina and meet with their crew early so that we can get them on to the vessel without other guests there and have them all comfortable before they arrive. When and where possible we do ask that someone traveling with our wheel chair guest is able to assist with carrying them on to the vessel – we have a carry chair for this purpose.

There are toilet facilities available at our booking office, at the marina and also on our vessel. We also have life jackets placed under each seat on our vessels with the donning procedures outlined during our safety presentation. It is recommended to take precautions for sea sickness. We have seasickness medication available at our Retail Store.



AT THE MARINA

We have a carry chair at our marina which we transfer our wheel chair guests into to carry them on to our vessel (their wheel chairs can be stored in one of our sheds which is then locked up). There is a ramp to walk along to get us to the bow of the vessel, where we then walk down three steps.

We then walk along the deck to the front door where there is a step into the boat where we will then place our guests comfortably in their seat for the tour.

Our captains do their best at all times to provide the best possible sightings of marine life when we have a wheel chair passenger on board with us, but as I am sure you can appreciate when working with nature there are times when this may not go to plan.

Our captains also reserve the right to place a mobility restriction on our tours if they deem sea conditions unsuitable.



DIFFERENCE BETWEEN OUR TWO VESSEL TYPES

Tohorā - Wawahia - 18m Catamaran

Once wheeled on to the bow of the vessel there are 3 steps down on to the lower deck. There is a raised lip as we enter into the main cabin.

The two front seats on either the port or right of the vessel allows for great viewing. Your captain will do their best to keep the windows clear and place marine life sightings on the side of the vessel you are seated.

We have two toilets on board, they are not wheel chair accessible. It is recommended to use the facilities at our booking office beforehand.

Te Ao Mārama - 24m Catamaran

Once wheeled on to the bow of the vessel there are 3 steps down on to the lower deck. There is a raised lip as we enter into the main cabin. This lip has a rubber cover that allows a wheelchair to enter with ease.

The two front seats on either the port or right of the vessel allows for great viewing. Your captain will do their best to keep the windows clear and place marine life sightings on the side of the vessel you are seated.

There is space between the rows of seating to wheel a chair through the cabin with plenty of space on the back deck (the stern to move around, keeping in mind there will be other guests on board).

We have a specially built toilet for easy access for our guests in a wheelchair.



FEATURES ON OUR NEW WAKA TE AO MĀRAMA



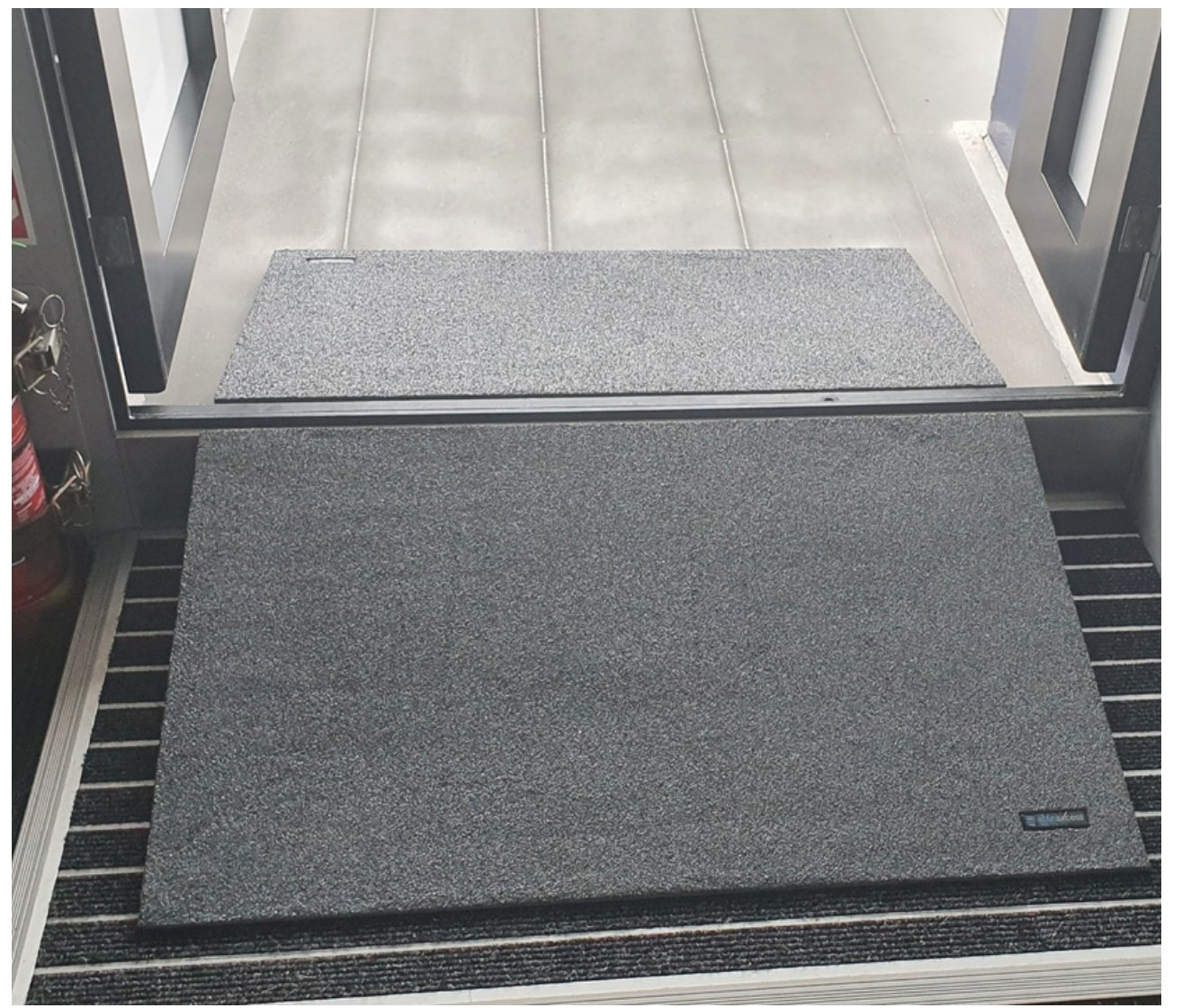
Wheelchair Access Bathroom



Front Deck - The Bow



Back Deck - The Stern



Rubber Ramp into the main cabin



Wide aisle with room to wheel through



Wide with room to wheel through